



Bay State Commandery  
Knights Templars

No. 38

Brockton, Massachusetts

Fiftieth Anniversary

September thirteenth

Nineteen hundred twenty-three

SPECIAL CONCLAVE  
OF  
BAY STATE COMMANDERY  
KNIGHTS TEMPLARS  
NUMBER THIRTY-EIGHT

CORINTHIAN HALL, MASONIC APARTMENTS  
1.30 P. M.

SUNDAY, SEPTEMBER 9, 1923

FOR THE PURPOSE OF ATTENDING DIVINE SERVICE AT THE SOUTH CONGREGATIONAL CHURCH  
IN FULL TEMPLAR UNIFORM. LINES FORMED AT 1 P. M. IN PAUL REVERE HALL.  
TRANSPORTATION PROVIDED.

---

PARADE WITH BAND AFTER DIVINE SERVICE  
TO MASONIC APARTMENTS, CENTRE STREET

---

BUFFET LUNCH  
AT MASONIC APARTMENTS

SELECTIONS BY MEISTERSINGERS

DIVINE SERVICE  
AT  
SOUTH CONGREGATIONAL CHURCH  
BROCKTON, MASS.  
SUNDAY, SEPTEMBER NINTH  
AT THREE O'CLOCK, P. M.

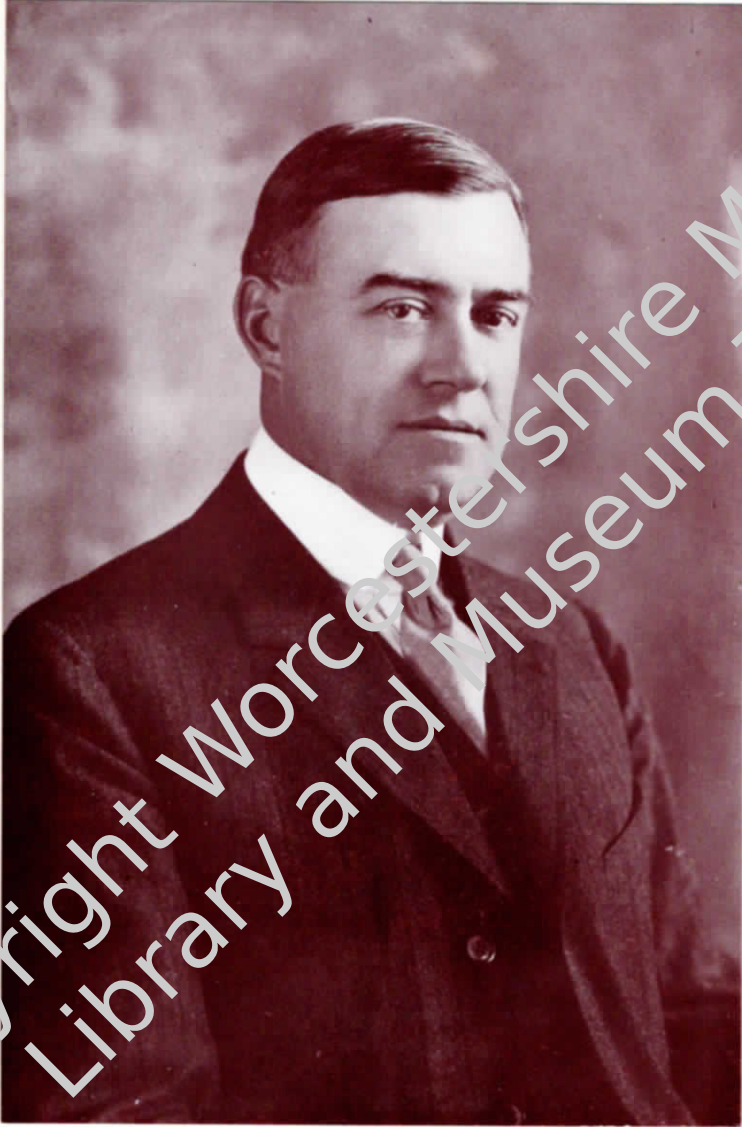
HISTORICAL RÉSUMÉ  
by  
Rt. Em. William H. Emerson

---

SERMON  
BY  
Rev. Sir J. Stanley Durkee, D. D.  
OF WASHINGTON, D. C.

---

Music by Meistersingers  
WALTER J. DODD, Organist



EM. SIR EDWARD A. KEITH  
COMMANDER  
1922 — 1923

Copyright Worcestershire Masonic  
Library and Museum Trust

RECEPTION

AT

EDUCATIONAL BUILDING

BROCKTON AGRICULTURAL SOCIETY

BROCKTON, MASS.

THURSDAY, SEPTEMBER THIRTEENTH

AT 4 P. M.

---

MUSIC

MARTLAND'S BAND

SIR MACE GAY, Conductor

BANQUET  
AND  
ENTERTAINMENT

EDUCATIONAL BUILDING

AT 6 P. M.

SEPTEMBER THIRTEENTH

---

ENTERTAINMENT  
INSTRUMENTAL AND VOCAL MUSIC

UNDER THE DIRECTION

OF

A. H. HANDLEY of BOSTON

---

DANCING

IN

BALL ROOM (under Grand Stand)

BROCKTON AGRICULTURAL SOCIETY

8 to 12 P. M.

ORCHESTRA

# MENU

---

FRUIT CUP

OLIVES

RADISHES

CELERY

SALTED NUTS IN CASES

BISQUE OF TOMATO

DINNER BISCUITS

FILLET OF BEEF

MUSHROOM SAUCE

DELMONICO POTATOES

STRING BEANS

CHICKEN SALAD

INDIVIDUAL FRUIT AND FLOWER ICES

SPUN SUGAR

FANCY HARLEQUIN

FROZEN PUDDING

SULTANA ROLL

FRUIT SAUCE

CHOCOLATE PARFAIT

ASSORTED FANCY CAKES

ROLLS

DEMI TASSE

## ADDRESSES

---

HIS EXCELLENCY CHANNING H. COX

Governor of the Commonwealth of Massachusetts

---

RT. EMINENT JAMES S. BLAKE

Grand Commander of the Grand Commandery  
of Knights Templars of Massachusetts  
and Rhode Island

---

MOST WORSHIPFUL DUDLEY H. FERRELL

Grand Master of the Most Worshipful Grand Lodge  
of Ancient Free and Accepted Masons of the  
Commonwealth of Massachusetts





OFFICERS AND GUARDS, BAY STATE COMMANDERY  
1922 — 1923

## LIST OF OFFICERS GUARDS AND PAST COMMANDERS

---

Em. Sir Edward A. Keith, *Commander*  
 Sir Roger Keith, *Generalissimo*  
 Sir Geo. W. Sprague, *Captain General*  
 Sir Louis F. Eaton, *Senior Warden*  
 Sir Frank E. Cobb, *Junior Warden*  
 Sir T. Harry Blackman, *Prelate*  
 Sir Theodore S. Davis, *Asso. Prelate*  
 Em. Sir Francis E. Shaw, *Treasurer*  
 Sir J. Frank Beal, *Recorder*  
 Sir Preston Abbott, *Standard Bearer*  
 Sir William S. Washburn, *Sword Bearer*  
 Sir Norman Petrie, *Beauseant Bearer*

Sir Geo. A. Grant, *National Color Bearer*  
 Sir Charles F. Woodard, *Vander*  
 Sir Arthur C. Dole, *Sentinel*  
 Sir Frank E. Packard, *Organist*  
 Sir Mace Gay, *Trumpeter*  
 Em. Sir Harold W. Sprague,  
*Master of Ceremonies*  
 Sir Warren S. Keith, *Adjutant*  
 Sir Walter A. Forbush, *Asst. Adjutant*  
 Sir John M. Dingley, *3rd Capt. Guard*  
 Sir E. Eugene Thayer, *2nd Capt. Guard*  
 Sir Frederick L. Howard, *1st Capt. Guard*

### GUARDS

Sir Everett M. Alger  
 Sir Royal C. Appleton  
 Sir Francis G. Baldus  
 Sir Horace A. Keith  
 Sir Geo. Knox  
 Sir William A. Rodgers  
 Sir Joseph A. Thurston  
 Sir Richard P. Whitman

Sir Fletcher Clark, Jr.  
 Sir Charles L. Fuller  
 Sir Nahum P. Gillespie  
 Sir Alton H. Kingman  
 Sir Arthur L. Long  
 Sir Ernest E. Southworth  
 Sir Arthur H. Tripp  
 Sir Arthur C. Woodard

Sir Harold W. Austin  
 Sir Cecil R. Carleton  
 Sir Thomas Carroll  
 Sir Geo. R. Knight  
 Sir Percy D. Roarty  
 Sir Elmer W. Soule  
 Sir William T. Weston

### PAST EMINENT COMMANDERS

\*E. Sir Edward Parker  
 \*E. Sir Basil Sanford  
 \*E. Sir Henry H. Packard  
 \*E. Sir Charles C. Babby  
 \*E. Sir Elmer W. Walker  
 \*E. Sir A. Cranston Thompson  
 \*E. Sir Veranus W. Filoon  
 \*E. Sir Edward S. Powers  
 \*E. Sir George F. Walker

E. Sir David W. Battles  
 \*E. Sir John A. Jackson  
 E. Sir Francis E. Shaw  
 E. Sir Ira F. Burnham  
 E. Sir Myron L. Keith  
 R. E. Sir William H. Emerson  
 E. Sir Albert Manley  
 E. Sir Calvin R. Barrett  
 E. Sir Herbert L. Tinkham

E. Sir Arthur L. Beals  
 E. Sir George A. Thatcher  
 E. Sir Fred Drew  
 \*E. Sir E. Francis Pope  
 E. Sir Wallace C. Keith  
 E. Sir Lester S. Howard  
 E. Sir Stephen P. Alden  
 E. Sir Arthur L. Cushman  
 E. Sir Harold W. Sprague

\*Deceased

## COMMITTEES

### EXECUTIVE

Em. Edward A. Keith  
Em. H. L. Tinkham  
Em. S. P. Alden  
Em. H. W. Sprague  
E. M. Carr, *Treas.*

Rt. Em. W. H. Emerson  
Em. W. C. Keith  
G. W. Sprague  
T. H. Blackman  
J. F. Beal, *Sec.*

Roger Keith  
Em. L. S. Howard  
Em. A. L. Cushman  
A. Roger Perkins

### RECEPTION

Em. David W. Battles  
Em. M. L. Keith  
Em. C. R. Barrett  
Em. G. A. Thatcher  
Em. L. S. Howard  
Em. H. W. Sprague

Em. Francis E. Shaw  
Rt. Em. W. H. Emerson  
Em. H. L. Tinkham  
Em. Fred Drew  
Em. S. P. Alden  
Chas. A. P. Mason

Em. I. F. Burnham  
Em. A. L. Beals  
Em. W. C. Keith  
Em. A. L. Cushman  
Albion H. Howe

### GUESTS

Em. W. C. Keith  
H. H. Williams  
J. N. Howard

Em. A. L. Beals  
T. H. Alden  
W. E. Shaw

E. M. Carr  
W. R. Cook  
C. W. Smith

### HISTORICAL

Rt. Em. W. H. Emerson  
Albion H. Howe

Em. M. J. Keith  
Chas. A. P. Mason

Em. I. F. Burnham  
J. F. Beal

### CHURCH

T. H. Blackman  
John R. Jones

Em. C. R. Barrett  
W. S. Keith  
W. J. Card

David Perkins  
T. S. Davis

### ACCOMMODATIONS

Roger Keith

Em. G. A. Thatcher  
C. F. Woodard

James P. Keith

### DINNER

Em. H. W. Sprague  
C. F. Knight  
R. C. Appleton

Em. Albert Manley  
J. H. Lingley  
A. A. Tripp

F. L. Howard  
A. C. Dole  
H. W. Austin

### ENTERTAINMENT

Em. S. P. Alder  
Frank E. Cobb

Em. Fred Drew  
F. G. Baldus

L. F. Eaton  
E. M. Alger

### MUSIC AND DANCING

Em. A. L. Cushman  
Mae Gay  
Frank E. Packard

Em. H. L. Tinkham  
C. R. Carleton  
N. P. Gillespie

Em. F. E. Shaw  
R. P. Whitman

### PRINTING

Em. L. S. Howard

W. T. Card

C. L. Fuller

### TICKETS

G. W. Sprague  
P. D. Roarty  
E. W. Soule

W. A. Forbush  
E. B. Southworth  
W. T. Weston

T. Carroll  
Geo. Knox